

# Week 6 Lab Instructions

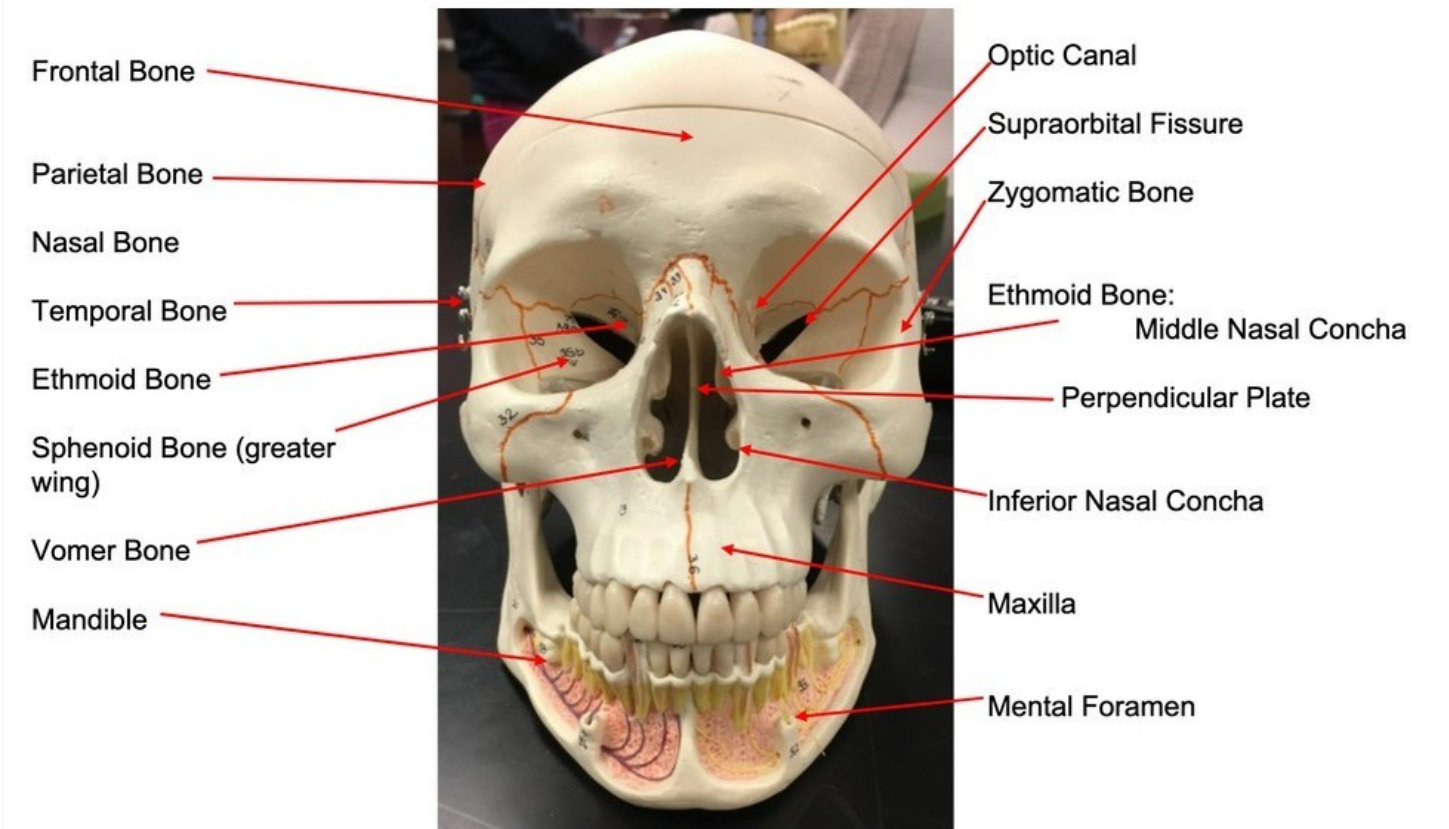
## Skeletal System

| Activity | Description                     | Points |
|----------|---------------------------------|--------|
| Part A   | Skeletal anatomy Labelling A-AD | 30     |
| Total    |                                 | 30     |

### References

1. Saladin Anatomy & Physiology: The Unity of Form and Function

### P

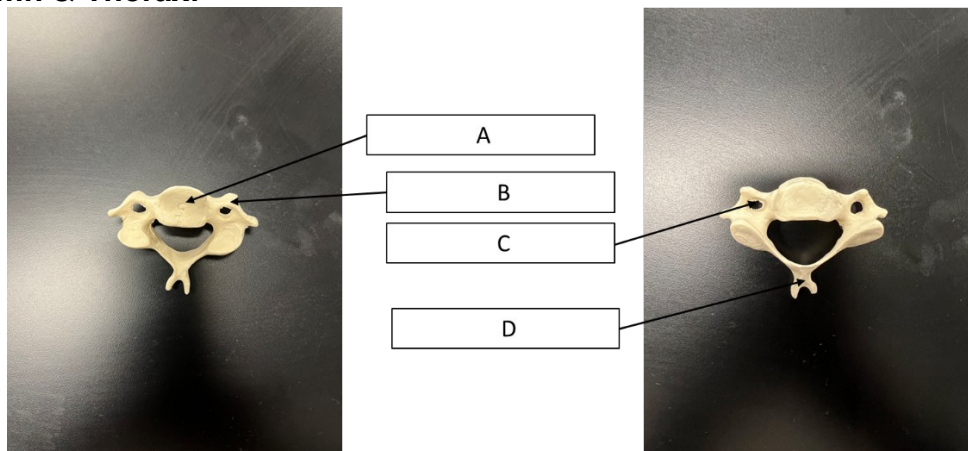


**Week 6 – Gross Anatomy of the Axial and Appendicular Skeletal System**

Objectives:

1. Identify indicated bones and features of bones from the axial and appendicular skeleton.

**Vertebral Column & Thorax:**



Inferior View

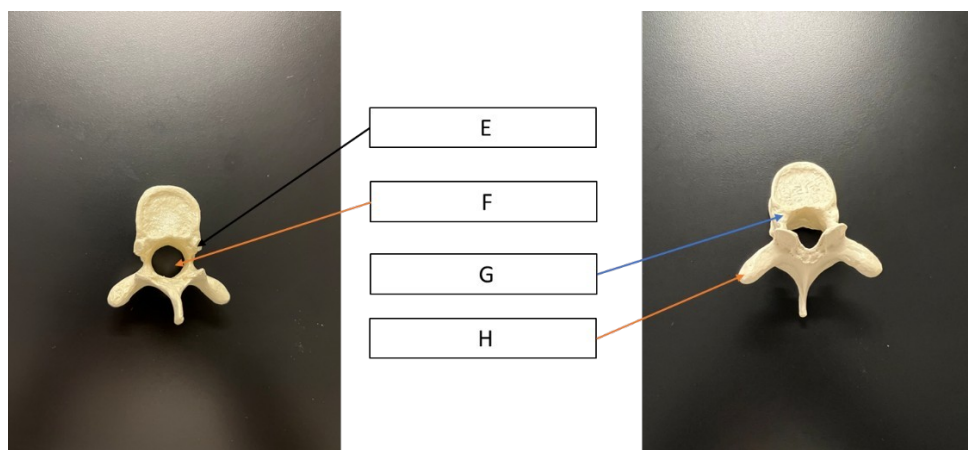
Superior View

A.)

B.)

C.)

D.)



Inferior View

Superior View

E.)

F.)

G.)

H.)