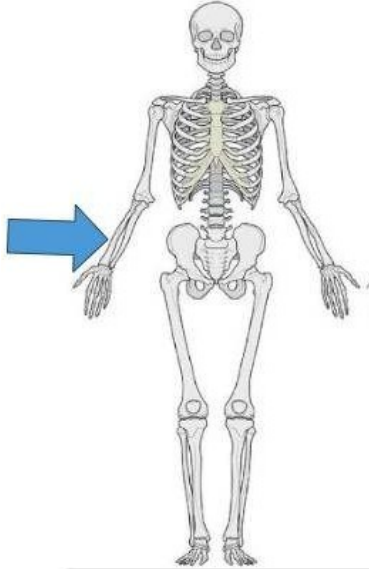


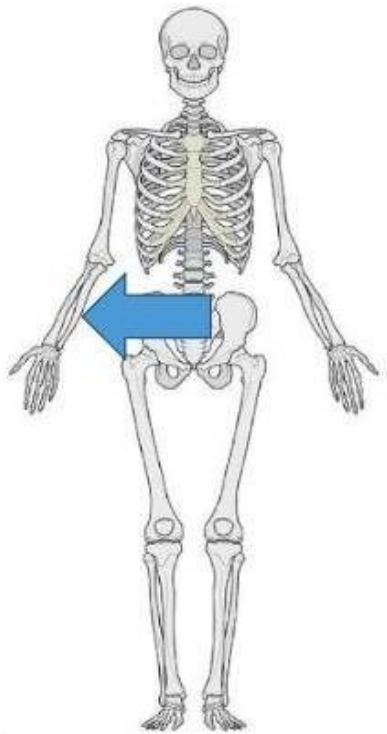
BIO251 Exam 3 Practice Test
(ANSWER KEY at Last Page)

1. Name the structure indicated by the arrow (1 point)



ANSWER: radius

2. Name the structure indicated by the arrow (1 point)



ANSWER: Ulna

3. Put the stages of bone repair in the **correct order** (1 point)
- a. Hematoma formation, soft (fibrocartilage) callus formation, hard (bony) callus formation, bone remodeling
 - b. Hematoma formation, hard (bony) callus formation, soft (fibrocartilage) callus formation, bone remodeling
 - c. Hard (bony) callus formation, soft (fibrocartilage) callus formation, bone remodeling, hematoma formation
 - d. Hematoma formation, bone remodeling, soft (fibrocartilage) callus formation, hard (bony) callus formation
4. Which term describes the hollow space within diaphysis (1 point)
- a. Periosteum
 - b. Medullary cavity
 - c. Endosteum
5. Destruction/resorption of bones and causing them to release calcium describes which type of bone cell.

Osteoclasts

- a. Osteoblasts
- b. Osteocytes
- c. Osteoprogenitor cells

6. Name the layer of epidermis indicated by the arrow (1 point)

