

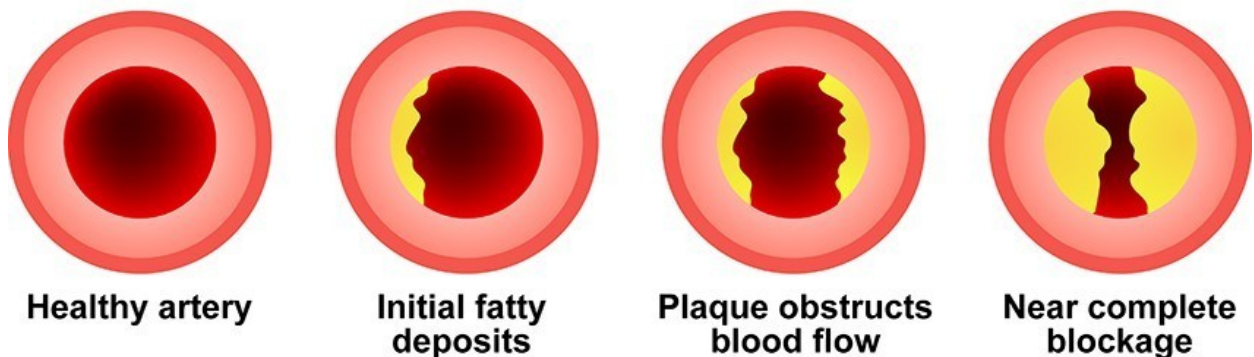
Introduction to Coronary Artery Disease

Coronary artery disease (CAD) is caused by atherosclerosis and affects the heart by obstructing the supply of oxygenated blood, altering myocardial cell metabolism and nutrient uptake. The progression of plaque build-up in the arteries causes resistance, lessening the ability for oxygenated blood and nutrients to flow through, and can lead to myocardial ischemia or infarction.

This learning module focuses on disease processes associated with coronary artery disease and enables you to meet the following course outcomes:

- CO 1: Analyze pathophysiologic mechanisms associated with selected disease states across the lifespan.
- CO 2: Examine the way in which homeostatic, adaptive, and compensatory physiological mechanisms can be supported and/or altered through specific therapeutic interventions across the lifespan.
- CO 3: Distinguish risk factors associated with selected disease states across the lifespan.
- CO 4: Integrate advanced pathophysiological concepts in the diagnosis and treatment of health problems in selected populations.

Coronary Artery Disease



Review of the Circulatory System

Complete the following sentences by choosing from the list of options.

The coronary **Arteries** are blood vessels that provide the major blood supply to the heart to pump through the circulatory system. **Deoxygenated** blood arrives to the right side of the heart and travels to the pulmonary arteries to release **carbon dioxide** and obtain **oxygen**.